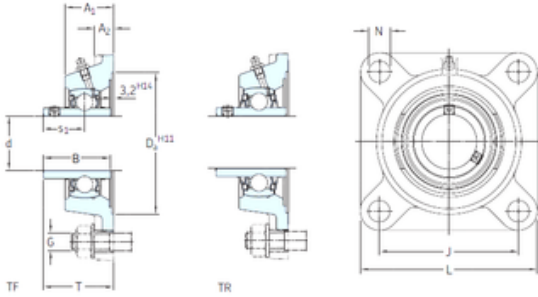




DODGE CONSOLIDATED BEARING CO., LTD.

SKF FYJ 55 TF Unidades de rodamiento

Bearing No. FYJ 55 TF



FYJ 55 TF Bearing 2D drawings and 3D CAD models

Bore Diameter	55 mm
d	55 mm
Da	150,8 mm
s1	33,4 mm
A1	43 mm
B	55,6 mm
G	16 mm
J	130 mm
L	162 mm
N	19 mm
T	58,4 mm
A2	20 mm
Weight	3,45 Kg
Basic dynamic load rating (C)	43,6 kN
Basic static load rating (C0)	29 kN
Fatigue load limit (Pu)	1,25
Category	Mounted Units & Inserts
Inventory	0.0
Manufacturer Name	SKF
Minimum Buy Quantity	N/A
Weight / Kilogram	3.285
EAN	7316571103211
Product Group	M06110
bore diameter:	55 mm
radial dynamic load capacity:	43.6 kN



DODGE CONSOLIDATED BEARING CO., LTD.

bolt center-to-center length:	130 mm
radial static load capacity:	29 kN
overall length/diameter:	162 mm
length through bore:	55.6 mm
overall height:	58.4 mm
finish/coating:	Blue Alkyd/Acryl Paint (RAL 5007)
bore type:	Round
bolt size:	19 mm
mounting type:	Four-Bolt Flange
maximum rpm:	3600 rpm
housing material:	Cast Iron
lubrication type:	Lubrication Fitting
locking device:	Set Screw
series:	FYJ
expansion type:	Non-Expansion Bearing (Fixed)
manufacturer product page:	Click here
bearing material:	Steel
manufacturer upc number:	7316571103211
Housing material	Cast iron
D_a	150.8 mm
D_{b1}	130 mm
D_{b2}	130 mm
A	43 mm
A_1	17 mm
A_3	3.2 mm
s_1	33.4 mm
R_G	1/4-28 UNF
R_1	25 mm
D_N	6.5 mm
SW_N	7 mm
G_N	1/4-28 SAE-LT



DODGE CONSOLIDATED BEARING CO., LTD.

J_6	148 mm
J_7	45 mm
N_4	4 mm
Basic dynamic load rating C	43.6 kN
Basic static load rating C_0	29 kN
Fatigue load limit P_u	1.25 kN
Limiting speed	3600 r/min
Mass bearing unit	3.1 kg
Thread grub screw G_2	M10x1
Hexagonal key size for grub screw N	5 mm
Recommended tightening torque for grub screw	16.5 N · m
Recommended diameter for attachment bolts, mm G	16 mm
Recommended diameter for attachment bolts, inch G	0.625 in